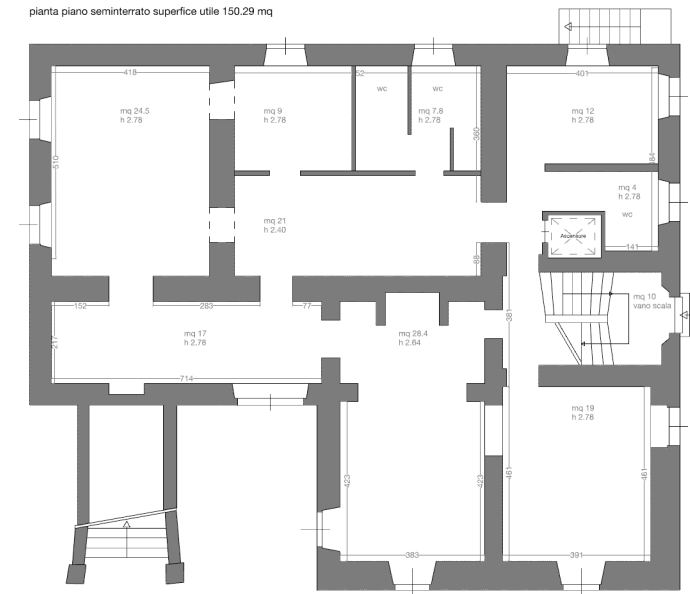


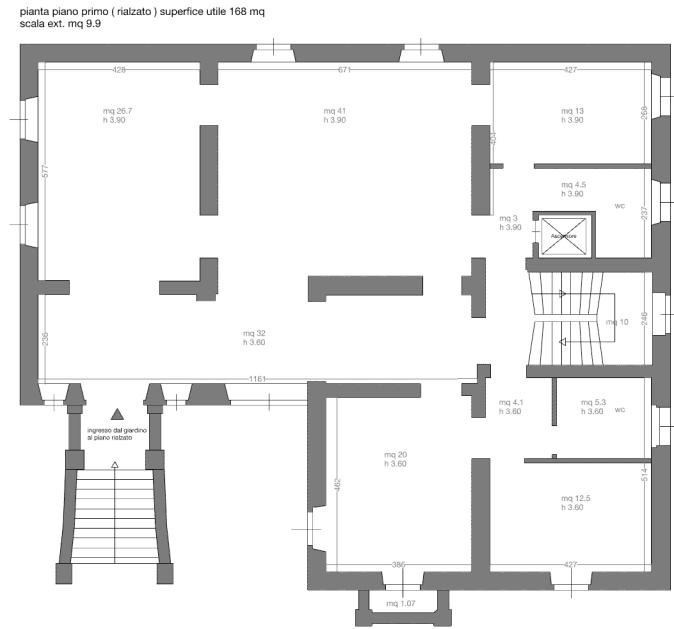
### Pianta Piano SI

pianta piano seminterrato superficie utile 150.29 mq



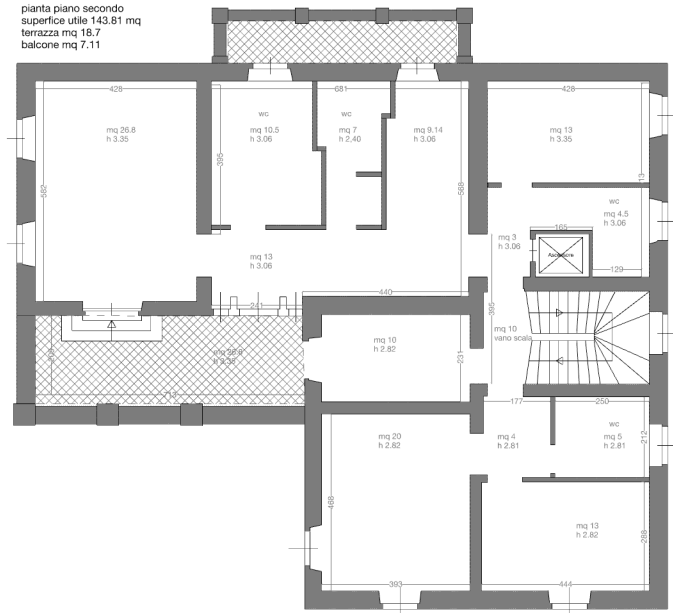
### Pianta Piano 1 ( rialzato )

pianta piano primo ( rialzato ) superficie utile 168 mq  
scala ext. mq 9.9



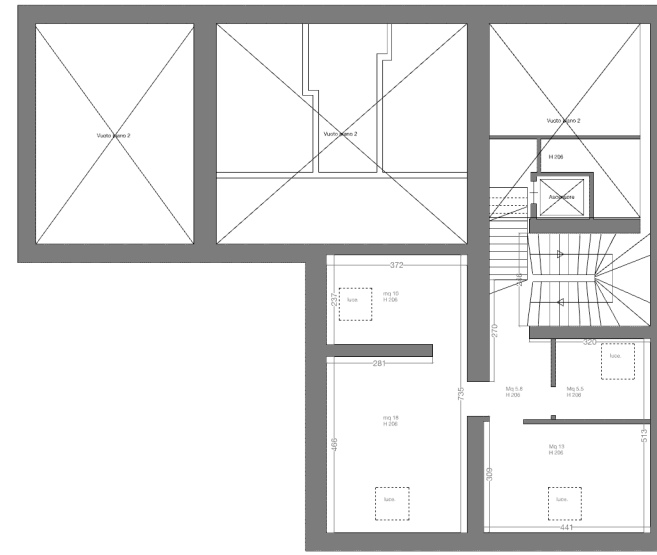
### Pianta Piano 2

pianta piano secondo  
superficie utile 143.81 mq  
terrazza mq 18.7  
balcone mq 7.11



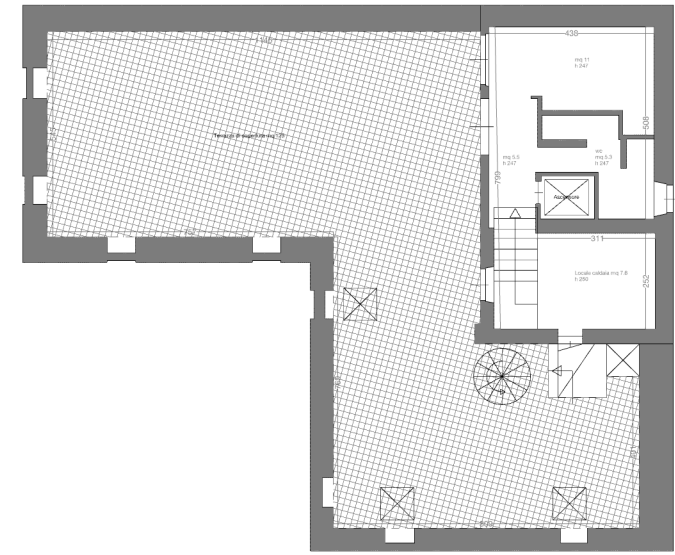
### Pianta Piano 3

pianta piano terzo superficie utile 57.27 mq ( deposito )



### Pianta Piano 4

pianta piano quarto superficie utile 29.68 mq piu terrazza di copertura 125 mq



### Pianta Piano 5 coperture

pianta piano 5 coperture piu terrazza di copertura mq 38

